



**GRIFFITH DARDANELLI
ARCHITECTS, PC**
670 Franklin Street, Schenectady, NY 12305
Tel (518) 370-0767 Fax (518) 370-0769

Karl P. Griffith, AIA
Sandra J. Dardanelli, AIA

MEMORANDUM

3 Page(s)
(Including this cover)

TO: Plan Holders

FROM: William Fortin

DATE: May 11, 2018

**RE: Ten Eyck Office Reconstruction
Schenectady Municipal Housing Authority
(GDA 1018)**

Enclosed is Addendum No. 2...

Please acknowledge receipt of this addendum by signing below and faxing this page back to our office at (518) 370-0769. Thank you...

**Received by: _____
Company Name and signature**

If you have any questions please contact our office.

wf

E-mailed or Faxed to all plan holders



**GRIFFITH DARDANELLI
ARCHITECTS, PC**

670 Franklin Street, Schenectady, NY 12305
Tel (518) 370-0767 Fax (518) 370-0769

Karl P. Griffith, AIA
Sandra J. Dardanelli, AIA

May 11, 2018

**ADDENDUM NO. 2 to
CONTRACT DOCUMENTS for
TEN EYCK OFFICE RECONSTRUCTION (GDA 1018)
For the SCHENECTADY MUNICIPAL HOUSING AUTHORITY**

This Addendum has (2) pages, including 11 x 17 sheet E-101.

SPECIFICATION ITEMS: None

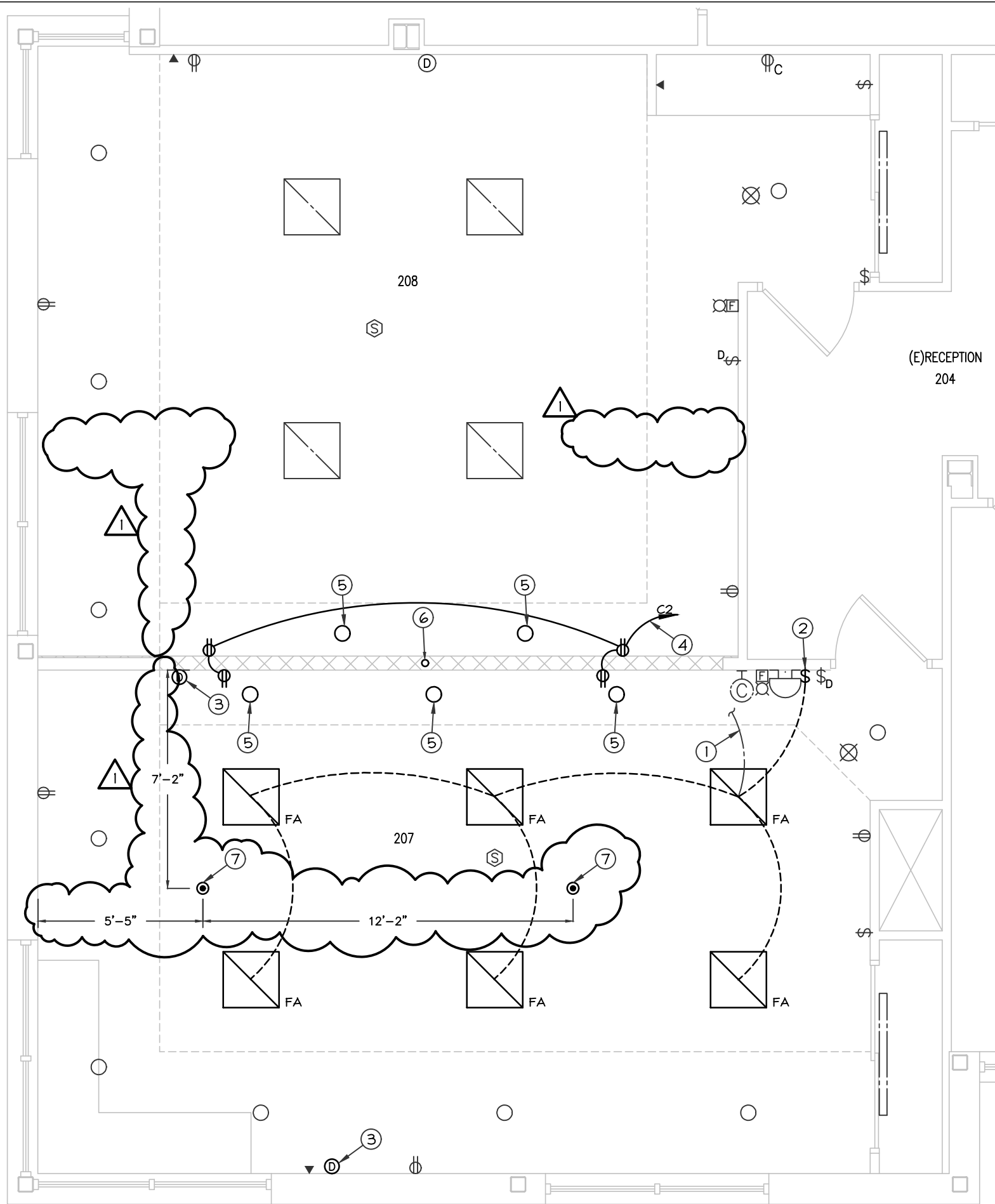
DRAWING ITEMS:

1. **SHEETS: A-01, A-10, A-41,**
 - a. Change room name "OFFICE" to read as "MEETING ROOM"
 - b. Change room name "(E)MEETING ROOM" to read as "OFFICE"

2. **SHEETS: E-101**
 - a. Delete and substitute with enclosed drawing sheet dated 3/29/2018, 1 page

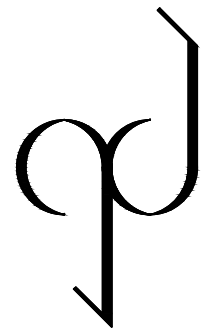
END OF ADDENDUM NO. 2

KPG:wf



CONSTRUCTION NOTES:

- ① CONNECT TO EXISTING CIRCUIT LEFT BY REMOVALS.
- ② NEW SWITCH FOR NEW RECESSED LIGHTING.
- ③ NEW DATA OUTLET. PROVIDE CABLING BACK TO 'IT' CLOSET. SEE SHEET E-001 FOR DETAIL AND 'IT' CLOSET LOCATION.
- ④ PROVIDE NEW CIRCUIT TO PANEL C2. PROVIDE NEW 20 AMP SIEMANS TYPE BL BREAKER IN EXISTING PANEL.
- ⑤ REINSTALL RETAINED FIXTURE. CONNECT TO WIRING LEFT BY REMOVALS.
- ⑥ PROVIDE POWER AND DATA FROM CEILING TO CEILING BELOW FOR CONNECTION TO FURNITURE. PROVIDE CABLING BACK TO 'IT' CLOSET FOR TWO DATA OUTLETS. PROVIDE CIRCUITRY BACK TO PANEL CL.
- ⑦ PROVIDE POWER AND DATA FROM CEILING BELOW. VERIFY EXACT LOCATION OF CORE DRILL PRIOR TO INSTALLATION. FINAL CONNECTIONS AT FURNITURE TO BE BY FURNITURE PROVIDER.



**GRIFFITH
DARDANELLI
ARCHITECTS, PC**
 670 Franklin Street
 Schenectady, NY
 12305
 Tel (518) 370-0767
 Fax (518) 370-0769

Karl P. Griffith
 Sandra J. Dardanelli

Drawing Title
PARTIAL FLOOR PLAN - ELECTRICAL - NEW WORK

Project Title
**TEN EYCK OFFICE RECONSTRUCTION for the
SCHENECTADY MUNICIPAL HOUSING AUTHORITY**

NO.	DATE	DESCRIPTION	Prj. No.
1	5/11/18	ROOM CHANGED	2018001.00
REVISIONS			Scale: AS NOTED

A-1

PARTIAL FLOOR PLAN - NEW WORK

1/4"=1'-0"


HA2F
 CONSULTANTS IN ENGINEERING
 1 VAN PATTEN DR., CLIFTON PARK, NY.
 12065 (518) 877-8566

Drawing No.

E-101